

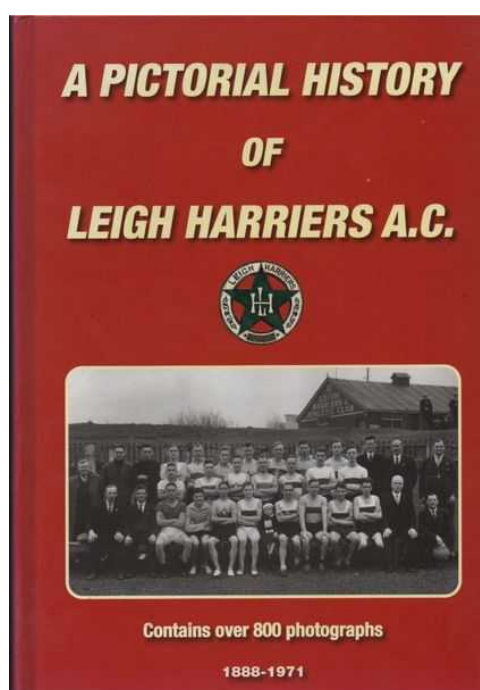
REG GOODWIN, 1924 OLYMPIC SILVER MEDALIST



Reg Goodwin in the early 1950's

I was alerted to the career of 1924 Olympic silver medalist Reg Goodwin by Tony Taylor's article on the Lancashire Walking Club website: <https://lancswalkingclub.com/2021/03/05/the-february-reg-goodwin-virtual-3-kilometres/>.

The information and pictures in the article draw heavily on John Taylor's remarkable tour de force, *A Pictorial History of Leigh Harriers AC: 1888-1971*. Tony notes that the book contains over 800 remarkable images and is rich in its evocation of an almost innocent amateur past when athletics was not for sale.



The photos and most of the information in this article are drawn from the Lancswalkingclub website article.

Although born in London, **Gordon Reginald (Reg) Goodwin** spent much of his life in Leigh, Lancashire.

Born: 17 December 1895, Lambeth, London

Died: 14 February 1984 (aged 88), Leigh, Greater Manchester

Having finished second in the AAA 2 mile walk and 7 mile walk in 1923, Goodwin won both events in 1924. He won the 2 miles again in 1925 and the 7 miles in 1926. He also won the 2 miles walk at the English AAA Meeting in each of the three years that these Championships were held (1923-25).

On the basis of his outstanding form in the years leading up to 1924, he was selected to represent Great Britain in the 10,000m walk at the 1924 Paris Olympics. He won his heat in a time of 49:04.0 and came second in the final with 48:37.9.

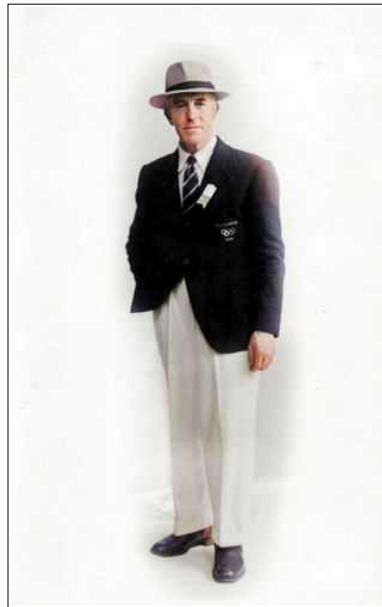


*Left: The start of the 1924 10,000m Olympic walk (Reg Goodwin is second from right)
Right: Goodwin (second) trails Italian winner Ugo Frigerio*

At the end of his outstanding career, his personal bests read as follows

2 Mile Walk:	14:07.4 (1925)
10,000m Walk:	48:37.0 (1924)
7 Mile Walk:	52:00.6 (1924)

He was later a walking judge at the 1948 Olympics and served as President of the RWA in 1952.



Reg Goodwin – 1948 Olympic racewalking judge

See more at [https://en.wikipedia.org/wiki/Gordon_Goodwin_\(athlete\)](https://en.wikipedia.org/wiki/Gordon_Goodwin_(athlete)).

And to complete this little article, the 3 pages on Reg Goodwin from John Taylot's book follow.

Gordon Reginald Goodwin was born at 117 Walnut Tree Walk, Lambeth, London, on the 17th December 1895. He moved up north to Leigh, Lancashire in 1910 with his uncle Edward Charles Lock, and started work at the Anchor Cable Co. Ltd.

He was entered in the Leigh Harriers 1,000yds club championship for the Harry Brown Shield, 23rd May 1914, where he was unplaced.

A few months later the Great War started and in January 1915, he enlisted at Leigh, into the East Surrey Regiment, Regt No.8508. He served over four years in France, Salonica and Turkey, where he was wounded in the shoulder.

His first race after the war was a 2-mile running handicap, competing for London A.C., which he won in 10min 53sec on 23rd Oct 1919. Two days later he finished 25th in the 7-mile road walking association scratch race in a time of 63min 55sec for which he won the novice prize.

Reg progressed to the highest standard in the country, greatly assisted by his uncle, Edward C.Lock, who himself was a well known Surrey athlete and had competed successfully from 1881 to 1896, he was a great track runner and a cross country champion. In 1892 he won the 1,000yds foot race at Mortlake, Surrey and was presented with an opal tie pin by the Duke of Teck, father of Queen Mary who was also present at the event. Unfortunately, he lost the pin in 1935, but wrote to Queen Mary and, through her private secretary, she sent him a beautiful letter the following week, enclosing a gold pin with a bluish stone, bearing her monogram to replace the lost pin.

Reg was selected for the British athletic team at the 1924 Olympics in Paris, where he competed in the 10,000m walk. Reg won his heat, and finished second in the final for a well deserved silver medal.

He moved back to Leigh in 1925 and returned to his old job at the Callender Anchor cable works, where his uncle Edward was the inventor of his own tinning process.



Reg walking to a silver medal behind the winner Ugo Frigerio, of Italy, in the final of the 10,000m at the Paris Olympics, 13th July 1924.



Reg's silver medal won in the 10,000m walk at the Paris Olympic games. He retired from competitive walking in 1927 and turned to the administrative side of the sport he loved.





Reg leading the 1924, 7-mile British A.A.A. track championship in the old colours of Surrey walking club.

In 1925 Gordon Reginald Goodwin was a member of Leigh Harriers athletic club and the Lancashire walking club, in addition to being a member of the London A.C. and Surrey W.C.

In March 1925 he won the Leigh Harriers members 2-mile walk from W.Brown and A.C.Gregory. In May of that year Reg entered the Harriers 2-mile open walk handicap giving starts up to 480yds, he finished fourth 150yds behind the winner T.Garner-Jones of the Liverpool Pembroke A.C. in 14min 43sec.

Reginald married Elizabeth Hurst of Chapel Street, Leigh, in June 1929, sadly she died in 1951 and was re-married in March 1957 to Miss Mabel Burton of Old Mill Lane, Atherton. During the Second World War he acted as senior air raid warden at Atherleigh Hospital (post-9).

At the 1948 London Olympics he was selected as one of the judges for the walking events. He was President of the Northern R.W.A. in 1949-52, and National R.W.A. in 1952. He was a life member of the Surrey W.C. and Lancashire W.C. and a member of the English selection committee.

During the late 1940s, he started to coach a young lad at the club named Jack Sankey, who became the Harrier's, Lancashire and Northern walking champion in the 1950s.

G.R.Goodwin died 18th February 1984, aged 88, and was cremated at Overdale Crematorium, Bolton. His wife Mabel died in 2001 aged 87, Reg never fathered any children so his medals, trophies and awards which he won during the 1920s were distributed amongst his friends, some of these medals can be seen in the Harriers museum at Leigh.



Pavesi, the winner, taking the lead from Goodwin, Surrey, in the Bishop of Birmingham's twenty miles walk.



Reg's 1924 & 1948 Olympic blazer pocket badges.

Reg was beaten into second place by D.Pavesi of the Italian Sporting Union in October 1922.



Reproduced courtesy of Wigan Heritage Service

ATHERLEIGH HOSPITAL PERSONNEL AIR RAID

WARDENS GROUP OF POST -9. The post was situated in an outbuilding at the public institution on Leigh Road, June 1941.
Back row left to right: A. Griffith, Mr Wooley, J. Davis - Headwarden, G.C. Morris - Senior Warden, A.R. Stone.
Middle Row: Unknown, Mr Medows, G.R. Goodwin - Senior Warden, Rev A.H. Bowdell incumbent of St John the Evangelist, Kirkhall Lane from 1936, Mr Eglington.
Front Row: Mr Whittle, E. Burns, K. Shovelton, Mrs Bowdell, Mrs Stone, Mr G. Robertshaw.

ATHLETIC ACHIEVEMENTS BY GORDON REGINALD GOODWIN

SAILTEANN GAMES, DUBLIN.

1924 2nd 3,000m 13min 41sec

ORDINARY OPEN SCRATCH RACES

- 1922 2nd 20-mile "Bishop of Birmingham" Walk 2hr 49min 56sec
- 1921 1st 7-mile R.W.A. Open walk 54min 10sec
- 1922 1st 7-mile Belgrave Harriers Walk 54min 9sec
- 1924 1st 7-mile Belgrave Harriers Walk 55min 20sec
- 1923 1st 10-mile Cadet Batt. Brighton Walk 1hr 28min
- 1923 1st 2-mile "British Games" walk 14min 40sec
- 1921 1st 11 1/4 mile S.W.C. Banstead Walk 1hr 37min 36sec
- 1922 1st ditto 1hr 36min 05sec course record
- 1923 1st ditto 1hr 38min 17sec
- 1924 1st ditto 1hr 36min 12sec
- 1922 1st 10-mile S.W.C. Warlingham 1hr 19min 25sec - course record

SURREY WALKING CLUB

1922 Croydon-Godstone-Croydon Race Walk, 8hr 45min

BOXING DAY "WEBB CUP" RACE, OPEN

- 1920 2nd in 2hr 51min 37sec
- 1921 1st in 2hr 45min 39sec
- 1922 1st in 2hr 41min 37sec
- 1923 1st in 2hr 40 min 12sec
- 1924 1st in 2hr 44min 04sec

"SURREY CUP" RACE, CLUB

- 1924 1st in 2hr 43min 14sec
- 1927 1st in 2hr 45min 20sec

20-MILE "HARRY PRESTON" CHALLENGE CUP RACE AT BRIGHTON

- 1920 1st in 2hr 53min 00sec
- 1921 1st in 2hr 33min 30sec short course
- 1923 1st in 3hr 14min 00sec long course, cup won outright

20-MILE NATIONAL ROAD WALKING ASSOCIATION CHAMPIONSHIP

- 1921 3rd in 3 hours
- 1922 2nd in 2hr 50min 56sec 1st in winning team
- 1923 2nd in 2hr 56min 12sec 1st in winning team
- 1924 2nd in 2hr 49min 31sec 1st in 2nd team
- 1925 3rd in 2hr 56min 05sec 1st in 2nd team
- 1926 Abandoned due to coal strike

AMATEUR ATHLETIC ASSOCIATION ENGLISH CHAMPIONSHIP

- 1923 1st 2-mile walk 14min 40sec
- 1924 1st 2-mile walk 14min 11sec
- 1925 1st 2-mile walk 14min 20sec

SOUTHERN COUNTIES ATHLETIC ASSOCIATION CHMPIONSHIP

- 1923 3rd in 2-mile walk 14min 48sec
- 1924 1st in 2-mile walk 14min 27sec
- 1925 1st in 2-mile walk 14min 09sec

HANDICAP RACES

- 1st 10-miles Ganett W.C. 80min 41sec
- 1st 10 1/2-miles Ganett W.C. 94min 46sec
- 1st 2-miles City of London Police
- 1st 5 1/2-miles Micens Park Harriers
- 1st 2-miles Ashcombe Harriers
- 1st 2-miles Woking Club
- 1st 6 1/2-miles Sutton Police Sports
- 1st Surrey W.C. 7-mile scratch
- 1st Surrey W.C. 10-mile scratch
- 1st Surrey W.C. 4-mile scratch
- 1st Surrey W.C. 7-mile scratch

AUGUST 1923, MARCH & MAY 1925

- 2nd 2-mile Leigh Police Sports
- 1st 2-mile Leigh Members, scratch
- 4th 2-mile Leigh Harriers Open

SURREY COUNTY ATHLETIC ASSOCIATION CHAMPIONSHIP

- 1920 2nd in 10-mile walk
- 1922 2nd in 10-mile walk, winning team
- 1923 1st in 10-mile walk, winning team
- 1923 1st in 2-mile walk 14min 51sec
- 1924 1st in 10-mile walk, winning team
- 1924 1st in 2-mile walk 14min 51sec
- 1925 1st in 10-mile walk, winning team
- 1925 1st in 2-mile walk 14min 35sec
- 1926 1st in 10-mile walk, winning team
- 1926 1st in 2-mile walk
- 1927 1st in 10-mile walk, winning team

OLYMPIC GAMES PARIS 1924

- 2nd in 10,000m walk 48min 37sec
- Winner of 1st heat in 49min 04sec

AMATEUR ATHLETIC ASSOCIATION OPEN CHAMPIONSHIP

- 1921 3rd 7-mile walk 55min 21sec
 - 1921 7th 2-mile walk 15min 11sec
 - 1922 2nd 7-mile walk 53min 37sec
 - 1922 5th 2-mile walk 14min 49sec
 - 1923 2nd 7-mile walk 55min 19sec
 - 1923 2nd 2-mile walk 14min 31sec
 - 1924 1st 7-mile walk 52min 00sec
 - 1924 1st 2-mile walk 14min 11sec
 - 1925 4th 7-mile walk 55min 09sec
 - 1925 1st 2-mile walk 14min 07sec
 - 1926 1st 7-mile walk 53min 56sec
- Was the second fastest 7-mile championship, since the race was instituted in 1866. Fastest performance E.J. Webb 51min 37sec in 1910.

CLUB CHAMPIONSHIPS

- 1921 1st in 10-mile, Ashcombe A.C.
- 1924 1st in 3-mile, London A.C. Challenge cup race 22min 09sec
- 1925 1st in 3-mile London A.C. Challenge cup race 21min 51sec

1925 INTER-COUNTY CHAMPIONSHIP

- 1st in 3-mile inter-county walk in 21mins 48sec

INTERNATIONAL 3-MILE WALK

- Madison Square Garden, New York, 1926
- 3rd in 21min 49sec

1924 INTERNATIONAL 3-HOURS WALK, CHELSEA

- Reginald covered 20-mile, 628yds in 3 hours:
- second man covered 19-mile 1,100yds.